

## **Historic, Archive Document**

Do not assume content reflects current scientific knowledge, policies, or practices.



62-14 2170

# SEED NEWS

The Farmers Seed Guide

QUICK  
DEPENDABLE  
SERVICE

REAL  
MONEY SAVING  
PRICES



ALFALFA—THE CROP OF GREATEST PRODUCTION

## Kansas Seed Co.

SALINA, KANSAS

422-24-26 North Santa Fe Avenue

L. D. Phone 498

# Advises Growing More Alfalfa on Every Farm



CHAS. HENNING

at present between nine (9) and ten (10) million acres. It seems strange to those who are familiar with this wonderful plant that so few acres should be devoted to its culture.

There are numerous varieties of Alfalfa and more are being added each year by selection and introduction, but for the country as a whole, the COMMON KANSAS GROWN NON-IRRIGATED "single root system" ALFALFA has proven to be all that could be desired. This variety is so well adapted that no one need hesitate to plant it, or wish for anything better. This Alfalfa seed has proven hardy, particularly when the seed is produced on fields 15 to 20 years old. Only the hardest plants would have survived to this age, and the seed from such would undoubtedly produce hardy plants.

For seeding fields that are to be irrigated, there would doubtless be very little difference as to whether the seed was from irrigated or dry land fields. For seeding on land that is not to be irrigated, particularly in the drier sections, seed from non-irrigated fields would be preferable.

Alfalfa, when well established, is one of the most vigorous and persistent of agricultural plants. It will endure weeds, dry weather, and other unfavorable conditions to a remarkable degree. It will also crowd into the edges of alkali spots further than most other plants. However, it responds readily to the favors of soil and climate, and because of its great value as a crop should be given favorable conditions to start in. A deep, firm fertile, well drained, moist soil, rich in lime, reasonably free from weeds and inoculated, will generally insure success.

Alfalfa roots very deep unless prevented by rocks or dry soil. It will produce as much on a thin, dry soil as any other crop, but when there is a chance for it to reach permanent moisture through 10 to 30 feet of good soil, it will, once established, go on producing crops every 30 to 40 days during the growing season, with very little regard to climatic conditions. The roots of Alfalfa penetrate dry soils or dry gravel beds very slowly and often the poorer portions of the field will be found to be underlaid by such material. On such soil a thin seeding will succeed much better than a thick one, because the roots of a few plants will find sufficient moisture to penetrate deeper and perhaps go through the dry strata, while many plants in a thick seeding would not be able to do so.

Mr. Henning is a firm member of the Kansas Seed Co. and has direct charge of all Alfalfa Seed handled. Mr. Henning was born and raised on a farm near Glasco, Kansas, and has spent a lifetime in the interest of agriculture. He is without a doubt the largest individual buyer of Alfalfa Seed in the state of Kansas. He has traveled the highways and the by-ways of the Alfalfa Seed Belt from one end to the other. The Alfalfa Seed raisers probably know him better than any other man in the seed business today. Mr. Hennings ideas are practical, taken from actual results in the field of production, over a period of years with varying weather conditions.



KANSAS GROWN ALFALFA

# To Our Friends and Customers

We have endeavored to make "SEED NEWS" a real help to you in selecting varieties and planning your crops. Instead of a big showy, expensive catalogue that lists hundreds of varieties of field seeds, irrespective of value, with long confusing descriptions for you to wade through you will find in our "SEED NEWS" only the best and most desirable varieties of Field Seeds.

We are continually striving to supply you with the best that can be had in seeds for the money spent: We own and operate our own plant, and our equipment for cleaning, grading, etc., is second to none. Most of our seeds are purchased direct from the growers and we are able to sell high grade seeds at reasonable prices. Some of the largest seed houses in the world are numbered among our customers. We sold one of these customers fifteen (15) car loads of Alfalfa and Clover seeds in one season.

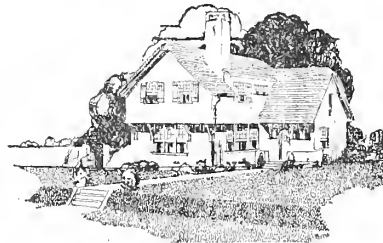
We thank all of our friends and customers for their liberal patronage in the past, and hope to hear from them often during the coming season. The season just past was the largest in our history.

## FOR BEAUTIFUL LAWNS

—use our—

# Blended Lawn Grasses and Mixtures

RELIABLE  
GRASSES  
MAKE  
FINEST  
LAWNS



LAWNS  
IMPROVE  
YOUR  
HOME'S  
APPEARANCE

### KENTUCKY BLUE GRASS

There is absolutely no grass better for a lawn than this. It comes early and stays green in the fall later than other grasses. Our seed is the purest obtainable. Prices, postpaid, per lb. 50c; 2 lbs. 90c; 5 lbs. \$2.00.

### WHITE DUTCH CLOVER

One of the easiest grasses to get started and for this reason many prefer it. Our seed is Wisconsin grown, hardy and adapted for all parts of the United States. Prices, postpaid, lb. 60c; 2 lbs. \$1.10; 5 lbs. \$2.50.

### BERMUDA GRASS SEED

Lawn and Pasture Grass of the South. A persistent grower, forming a thick mat-like turf on the poorest, sandiest sod. Sun does not effect it. Prices, postpaid, per lb. 60c; 2 lbs. \$1.10; 5 lbs. \$2.50.



Showing Growth of Sudan in Field

## Don't Fail to Grow Sudan This Year

Every stockman and experiment farm that has tested this grass, state that it is fine hay, and stock eat it in preference to Alfalfa. It analyzes over nine per cent protein.

Sudan Grass which is one of the sorghums, is very similar in growth to Johnson Grass, but differs from the latter in that it is entirely free from the persistent underground root system which makes Johnson Grass sod so difficult to eradicate. Sudan Grass, being an annual and having fibrous roots similar to wheat or oats, is as easily controlled and eradicated as Millet at the close of the growing season. Sudan Grass is a thrifty grower, reaching from four to seven feet in height, producing medium small stems and an abundance of leaves which are broad and linear.

Sudan grass is no longer a new plant as it has been grown very extensively the past few years. For early pasture nothing compares with it. Many of our customers have been growing Sudan for early pasture and hay purposes and are frank to say that nothing will compare with it when it comes to actual worth and value. The ones who are growing Sudan are the greatest boosters for the crop and recommend it in the highest terms. Sudan excels all other forage crops for quick and successive production as it usually makes three crops a year of the highest feeding value. The demand for Sudan grass this year will be unusually heavy as everyone who has seen the crop grow wants to get seed and start growing it this year. Do not delay buying your Sudan grass seed early. Last season we could not begin to fill our late orders and we may experience the same condition this year. Our stock is of the best crop seed. Take our advice and buy Sudan early and in good liberal quantity and you will be prepared to grow the best and cheapest feed possible. Prices F. O. B. Saina, Bags Free:

per bu. \$2.40; 5 bu. \$11.85; 10 bu. \$23.50; 15 bu. \$34.85; 20 bu. \$46.00; 30 bu. \$67.50; 40 bu. \$85.00 50 bu. \$107.50



Large Hay Crops Are Assured When Using Our Superior Seed

# TIMOTHY

—for—

## Finest Hay

BUSHEL—45 POUNDS

Our seed this season is of extra fine quality, very pure, carefully cleaned and the kind of stock that pleases the most critical buyer.

### Spring Seeding Time March to June

When we consider that four times as much Timothy is cultivated as all other hay grasses combined, its place in American agriculture may be realized. This wide and favorable distribution is caused by the following factors: splendid hay value; adaptability to a wide range of soil and climate; inexpensive seed; ease with which a stand is secured; easily cut and cured. It has shallow, fibrous roots, growing in stools; grows 2 to 3 feet high. Succeeds best with a fine, well firmer seed bed. A dressing of manure or fertilizer is desirable as Timothy exhausts the nitrogen from the soil. If sown with Red Clover, Alsike or Sweet Clover, the Clovers supply the nitrogen to the soil and aid the growth of Timothy. When sown alone, 12 to 15 pounds per acre are required. We have been giving special attention to Timothy and have built up a tremendous mail order trade. Our customers are located all over the United States. We receive orders from the largest as well as the smallest buyer. No order is too large or too small for us to handle. Our aim is to furnish satisfactory seed at money saving prices. If we can save you money on seed, we want to do so. Last year our sales of Timothy seed were far above expectations. It was necessary for us to go into the open market for late supplies. We are going to try to take care of our Timothy customers this year better than ever before. Prices are very reasonable and a larger acreage should be seeded during this coming season.

As a crop to cut for hay, Timothy is probably surpassed by no other grass now cultivated. It is the most important and most popular of all the hay grasses and is adapted to a wider range of conditions than any other variety of grass and is always sure to grow. No other kind will stand the extremes of heat and cold better than this one. No other variety equals it in average yields or excels it in feeding value. It is not suited to light sandy soil as well as some other grasses. Prices F. O. B. Salina. Bags Free:

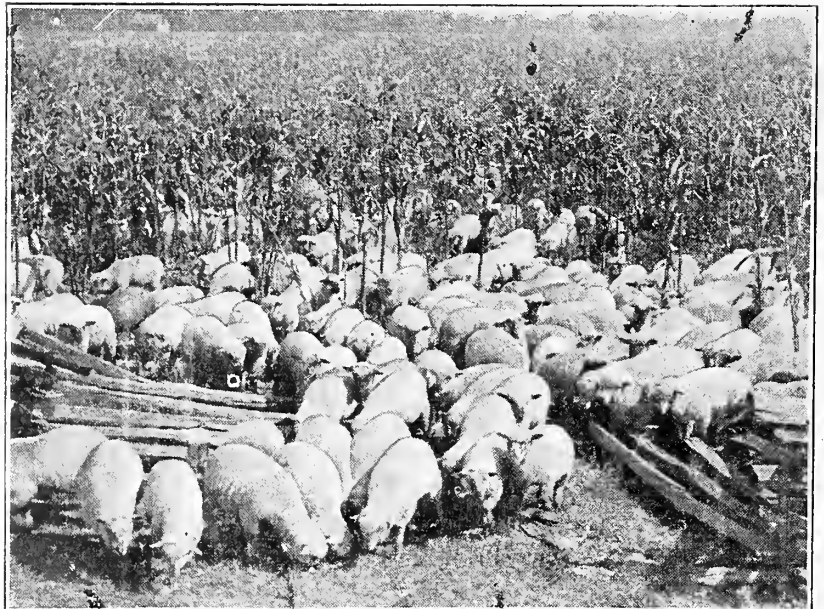
- Choice Quality—per bu. \$2.60; 5 bu. \$12.85; 10 bu. \$26.70; 15 bu. \$37.75; 20 bu. \$50.00
- Fancy Quality—per bu. \$3.00; 5 bu. \$14.85; 10 bu. \$29.50; 15 bu. \$34.40; 20 bu. \$58.00
- Supreme Quality—per bu. \$3.25; 5 bu. \$16.10; 10 bu. \$32.00; 15 bu. \$47.75; 20 bu. \$63.00

## Kentucky Blue Grass

### IDEAL PASTURE FOR STOCK

Blue Grass makes the ideal pasture for all stock. The value of Blue Grass cannot be overestimated. There is no other pasture grass that meets with as much favor. The fact that it is extremely hardy, never winter killing, withstanding the severest droughts and coming on early in the spring and growing late in the fall recommends it as a grass that every stock grower wants. Buy your Blue Grass early this year. The sooner you buy, the less money you'll pay. So buy now while we have a big supply and can make low prices. Present low prices justify using it freely. Prices F. O. B. Salina, Bags Free:

- Fancy Quality—per bu. \$3.50; 5 bu. \$17.40; 10 bu. \$34.60; 15 bu. \$51.60; 20 bu. \$68.40
- Supreme Quality—per bu. \$3.80; 5 bu. \$19.00; 10 bu. \$37.60; 15 bu. \$56.10; 20 bu. \$74.40



Lambs on Corn and Soy Beans Having Access to Kentucky Blue Grass Pasture

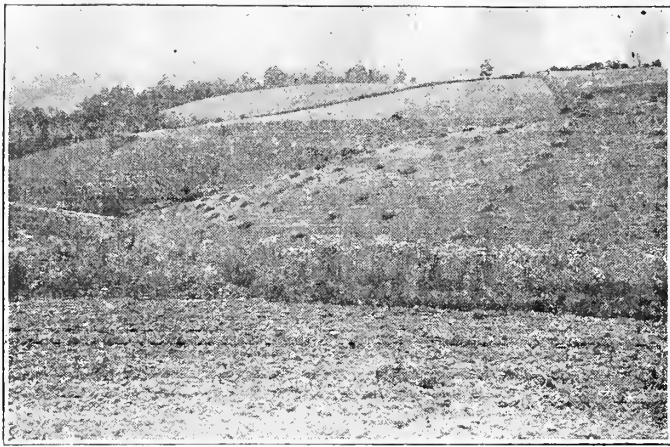
# Sweet Clover

Spring seeding February to July

HULLED SEED—60 POUNDS TO BUSHEL

**YIELD**

HAY—4,000 to 5,500 Pounds per Acre  
SEED—300 to 600 Pounds per Acre



Poor, Hilly Lands Produce Abundant Crops of Sweet Clover

We handle Sweet Clover Seed in a big way and have created a market at Salina which is quite generally known. We clean and grade Sweet Clover in our own plant right here in Salina. Remember that when you are dealing with us you are dealing with experts in Sweet Clover. Our prices are absolutely right when you consider the quality.

## THE GREATEST SOIL RENOVATOR, HAY AND PASTURE CROP

Best authorities endorse Sweet Clover. This plant is sometimes known as Bokhara, Honey Lotus, Tree Clover and Giant Alfalfa. It is attracting much attention through the agricultural and scientific publications. The truth about Sweet Clover is given by the foremost Agricultural Writers, Farm Papers and Agricultural Colleges. These facts show conclusively that Sweet Clover is an invaluable crop. Nothing superior for fertilizing, equal to Alfalfa in feeding value, excels for pasture purposes, greatest of all honey plants, inoculates the land for other crops. The following may interest you: "SWEET CLOVER DOES NOT BLOAT CATTLE LIKE ALFALFA" - "WILL STAND MORE FROST THAN ANY OTHER PASTURE PLANT" - "ANALYZES HIGHER BOTH IN TOTAL AND DIGESTIBLE PROTEIN" - "NO HARDER TO CURE THAN ALFALFA" - GREATEST GREEN MANURE KNOWN" "NEVER BLOOMS THE FIRST YEAR" - "BLOOMS THE SECOND YEAR, "PRODUCES SEED AND DIES" - "ALL KINDS OF STOCK WILL EAT BOTH HAY AND PASTURE." Sweet clover provides the quickest and cheapest way to make unfertile soils fertile. It is rich in protein and fits well in the crop rotation. We sell nothing but improved, re-cleaned seed, graded, scarified and hulled, also unhulled, however we do not recommend the latter. You will find our prices will cost you less per acre to sow your ground than others ask for equal quality. USE NITRAGIN THE ORIGINAL SOIL INOCULATOR.

## WHITE BLOSSOM SWEET CLOVER

(Melliotus Alba-Biennial)

This is the most commonly found and the one in greatest demand. It is the variety grown so extensively as a cultivated crop. This variety is destined to become the most important of the legumes and will add millions to the wealth of the farmers of this country. Sweet Clover will produce a crop of hay the first year. The second year you can harvest a crop of hay and the second crop can be harvested for seed. Our hulled Sweet Clovers are all scarified and we find it necessary to grade the seed into three different lots. No other crop will add as much fertility to the soil. As a feed crop it ranks on a par with Alfalfa. As a hay crop it will yield more per acre than any other type and is conceded to be the most desirable under average conditions. Prices F. O. B. Salina, Bags Free:

Fancy Quality—per bu. \$3.90; 5 bu. \$19.25; 10 bu. \$38.00; 15 bu. \$56.25; 20 bu. \$74.00  
Special Quality—per bu. \$4.50; 5 bu. \$22.25; 10 bu. \$44.00; 15 bu. \$65.25; 20 bu. \$86.00  
Supreme Quality—per bu. \$5.40; 5 bu. \$26.75; 10 bu. \$53.00; 15 bu. \$78.75; 20 bu. \$104.00



## YELLOW BLOSSOM SWEET CLOVER

(Melliotus Officinalis)

Very similar to the White Blossom, but does not grow so large and will not stand as much drought or abuse. If you wish Sweet Clover for fertilizing, the White Clover is generally considered superior. The Yellow is not nearly so valuable as a nitragin or humus builder and is more especially adapted as a hay crop or pasture crop. The crop is very palatable to stock. It contains less curarin and does not have a bitter taste. It is not a rank grower—more like Alfalfa. Our seed is scarified and we advise the Yellow Blossom type for hay or bee purposes. It will give you very satisfactory results. Prices F. O. B. Salina, Bags Free:

per bu. \$5.40; 5 bu. \$26.75; 10 bu. \$53.00; 15 bu. \$78.75  
20 bu. \$104.00



## GRUNDY COUNTY SWEET CLOVER

(White Biennial)

Also known as "Dwarf Variety Sweet Clover" It is very similar to the large White Blossom (Melliotus Alba) except it does not grow as large and is from two to three weeks earlier. It makes a finer quality of hay and in Grundy County Illinois, where it originated, it is most popular. Some of our growers here have experimented with this variety of Clover.

The seed is of a similar type but yields very satisfactory. Another good feature is its resistance to drought. Prices F. O. B. Salina, Bags Free:

per bu. \$5.40; 5 bu. \$26.75; 10 bu. \$53.00; 15 bu. \$78.75  
20 bu. \$104.00

## Yellow Blossom Annual Sweet Clover (Melliotus Indica—Wonderful Soil Builder)

This variety of Clover is a soil builder. We do not claim anything else for it. It cannot be used for feed like other Sweet Clovers. It is too bitter. Where a crop is wanted for enriching your land, no other Clover will compare with it. Grows one year—that's all. Sow it in the spring—April, May, June—8 to 10 pounds of seed with every acre of small grain and then plow it under early in the fall. Prices—F. O. B. Salina, Bags Free:

per bu. \$4.00; 5 bu. \$19.75; 10 bu. \$39.00  
15 bu. \$57.75; 20 bu. \$76.00

## Unhulled White Blossom Sweet Clover (Melliotus Alba—Biennial)

This is the same as the White Blossom listed at the top of the page. However, it has not been hulled and scarified. Although our equipment includes a huller and a scarifier, we always have a large supply of this unhulled seed as many of our customers will not use anything else. They prefer it to the hulled. It can be planted in the snows early in the spring. Hulled scarified seed cannot. Unhulled seed is 30 pounds per bushel. Prices F. O. B. Salina, Bags Free:

per bu. \$1.90; 5 bu. \$9.35; 10 bu. \$53.10  
15 bu. \$27.35; 20 bu. \$36.00



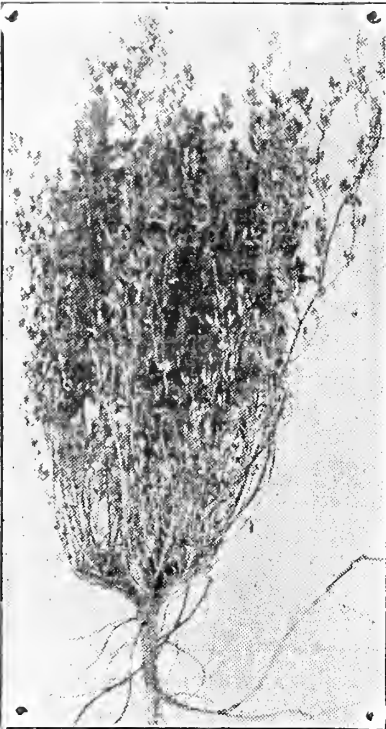
Sweet Clover Is A Heavy Hay Producer

# Alfalfa

The Most Superior of All Plants for Hay and Pasture

SPRING SEEDING TIME FEBRUARY TO JUNE

## Our Hardy Non-Irrigated Common Variety Alfalfa Seed



Common Variety Alfalfa

Buy Your Alfalfa Seed of Us. Why Take Chances of Getting Imported or Seed That Is Unadapted to Growing and Producing Crops in This Country? Watch Out for This. All Alfalfa Seed Coming from Canada Will Be Stained at Least 1% Iridescent Violet; from France 1% Green. All Unadapted Seed Will Be Stained at Least 1% Red

The government and State agricultural authorities are advocating that every farmer should have a field of Alfalfa. Don't let another year slip by without growing Alfalfa. There is absolutely no other crop that is as badly needed on every farm as Alfalfa. The most important thing is to get the right seed. Buy your seed from us—of "known Origin." Why take chances of getting Italian seed, French or irrigated southern seed? We believe the best hardy domestic seed is what the farmer wants and this is why we handle nothing but Domestic Alfalfa of the hardiest types.

We have four (4) grades of this seed. We buy seed direct from the growers. They truck it right to our plant. It is re-cleaned and graded in our own warehouse. We have many customers who buy direct from us in carload lots. We sell them season after season. Comparison is the true test of value. Do not be blinded by prejudice. Compare our samples and draw your own conclusions. We could buy southern irrigated or foreign seed for less money, but we must have seed that will give our customers the best results as we cannot afford to stand back of seed of doubtful quality.

We want to impress upon the buyer of Alfalfa seed the importance of hardy seed, full of vigor and adapted to your section and climate. This is what we offer you in our "Hardy Non-Irrigated Common Variety Alfalfa Seed." This is the kind of Alfalfa you want on your farm, something you can depend on for results. Our experience has been that this seed will do just as well or better than any seed you may obtain regardless of price. Why take a chance in buying your Alfalfa seed from someone who knows nothing about the origin of the seed they are selling you. We see the actual fields this seed comes from. It is well suited to your requirements. It is the seed we recommend you to buy. We consider it the best value in Alfalfa seed for our customers regardless of location. Kansas seed will grow in any state in the Union. It has proven to be the hardiest and best variety to use if you want something of special merit. Our price on Alfalfa Seed are unusually low and we can actually save you from \$1.00 to \$3.00 per bushel. Write us for samples and prices whenever you are ready to buy. On account of Kansas' short Alfalfa Seed Crop in 1929 we reserve the right to substitute with other Hardy Type Common. Prices F. O. B. Salina. Bags Free.

### COMMON VARIETY—Prime Quality

This quality is our bargain sales builder and is demanded by many farmers. If you don't object to the slight discoloration this quality will appeal to you. Most of the brownish seeds will grow. It is of a good hardy type, is clean and will grow well. Here's a fine chance to buy a quality of good Alfalfa seed cheap. Not the finest looking but a good sound value in hardy Alfalfa seed.

per bu. \$8.40; 5 bu \$41.00; 10 bu. \$81.00; 15 bu. \$120.00  
20 bu. \$158.00; 25 bu. \$196.25

### COMMON VARIETY—Fancy Quality

A beautiful quality of high grade Common Variety Alfalfa Seed. This quality is superior to most Common Alfalfa Seed. It comes from fields that have withstood extremely hard winters and hot dry summers. Such conditions kill out the weaklings. Only the strong and sturdy plants survive to make seed. Consider its hardness, its color, its plumpness, you will find it a high grade. It is seed that succeeds.

per bu. \$12.00; 5 bu \$58.75; 10 bu. \$116.50; 15 bu. \$174.00  
20 bu \$231.00; 25 bu. \$287.50

### COMMON VARIETY—Choice Quality

This quality is clean hardy Common Variety dependable and an exceptional bargain. It is a bit off color but the purity and germination is very good and if it were not for the discoloration would sell for \$2.00 per bushel more. We have hundreds of customers who buy this quality. It permits you to get started with the greatest of all money making crops in a very economical way. A real value.

per bu. \$10.20; 5 bu. \$50.00; 10 bu. \$99.00; 15 bu. \$147.00  
20 bu. \$194.00; 25 bu. \$241.25

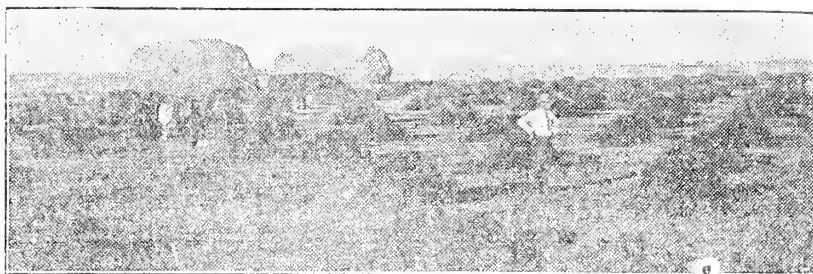
### COMMON VARIETY—Extra Fancy Quality

For the critical buyer, this is the best, nothing better. We recommend this seed to our customers in the strongest terms. It is our opinion that this quality is superior to any of the common types of Alfalfa Seed offered for sale. The bright golden color, big plump berries and hardness mean plants, full of life and strength, pep and vigor. This is your opportunity to buy the finest and save \$3 to \$4 per bushel.

per bu. \$13.80; 5 bu. \$67.75; 10 bu. \$134.50; 15 bu. \$201.00  
20 bu. \$267.00; 25 bu. \$332.50



# Alfalfa



## Grimm Variety Alfalfa Seed

### The Greatest Alfalfa Plant of the Age

#### Spring Seeding Time February to June

AVERAGE YIELD OF HAY PER ACRE 8000 TO 12000 LBS.

AVERAGE YIELD OF SEED PER ACRE 400 TO 600 LBS.

Grimm Variety or Everlasting Alfalfa, the super-hardy variety, probably the most widely known and talked of variety that is now on the market. It was originated in Minnesota by Wendelin Grimm many years ago by selecting the hardiest plants for several years until the type was thoroughly fixed. This variety withstands severest winters. The roots are much more branching than other varieties, more of a spreading root system, and the blossoms are plain and often variegated in color. On account of its hardiness, heavier growth and stronger vitality, a field of Grimm seeded Alfalfa will stand for many years. Weeds and other grasses do not kill out the Grimm variety the same as they do common variety. Fields of the Grimm variety have been known to stand from twenty to forty years and are still making heavy yields. Our Grimm usually comes from the Dakotas, Montana; Utah and Idaho and we take great precaution in securing our Grimm Variety Alfalfa Seed. Crop Authorities, Agricultural Colleges, Farm Paper Writers, Experimental Stations, etc.; are all advocating the use of Grimm Variety Alfalfa Seed. We do not believe we should have any trouble in convincing you that Grimm Variety Alfalfa Seed is the only variety you should sow. If we had the opportunity of talking to you face to face, this is the variety to use if you expect to get the maximum crop or make the most money off your land. Grimm Alfalfa is no experiment and the only reason this variety has not been grown more extensively has been due to the scarcity of seed, meant such high prices. Grimm Variety has been increasing every year and you can buy seed from us now that is very reasonably priced with the assurance of getting the greatest value money will buy. It requires less seed of the Grimm Variety to the acre, due to extra hardiness. We recommend 12 to 15 pounds per acre, this reduces the cost of seeding so that the difference in expense of seeding Grimm and Common is a very trivial matter. We have a big supply of seed and our prices will save you many many dollars. Prices F. O. B. Salina, Bags Free.

Special Quality—per bu. \$14.00; 5 bu. \$68.00; 10 bu. \$135.00; 15 bu. \$198.75; 20 bu. \$260.00  
 Choice Quality—per bu.—\$18.00; 5 bu. \$88.75; 10 bu. \$176.10; 15 bu. \$262.50; 20 bu. \$348.00  
 Fancy Quality—per bu. \$21.00; 5 bu. \$103.75; 10 bu. \$206.60; 15 bu. \$309.00; 20 bu. \$410.00

#### DAKOTA No. 12 ALFALFA SEED

This seed usually comes from fields that have stood there for years, living through cold temperatures and followed by dry summers. This seed is bound to produce strong, vigorous plants. This seed is extremely valuable for all sections where Alfalfa is grown as there is no question about it not being of the hardiest strain. In offering Alfalfa Seed, we offer nothing but the hardiest, non-irrigated strain, anyone wishing Dakota grown seed will find it to their interest to order the seed direct from us. Write for samples.

You will find a complete schedule of weights of seeds and the amount to sow per acre on the last page. Prices F. O. B. Salina, Bags Free:

per bu. \$15.00; 5 bu. \$73.75; 10 bu. \$146.00; 15 bu. \$217.00; 20 bu. \$288.00

#### UTAH GROWN ALFALFA SEED

Utah has become an important producing state in furnishing Alfalfa Seed. Thousands of acres are left for seed each year in Millard County and in the Uintah Basin. We offer you an extra hardy Utah grown Alfalfa seed of the highest quality and are pricing it at the lowest prices possible consistent with what others are asking. We know they cannot undersell us and furnish the same quality of seed. It will save you money to buy from us now. Our stocks will never be more complete and our prices surely will be higher when we have to replace our supplies later in the season. Be sure to figure with us on your Alfalfa seed requirements. We specialize in Alfalfa varieties of better grades. Prices F. O. B. Salina, Bags Free:

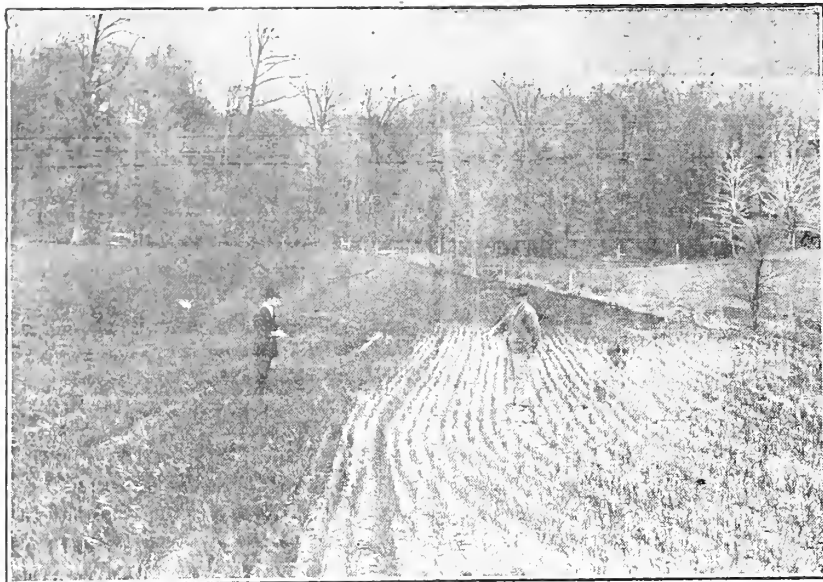
per bu. \$13.80; 5 bu. \$67.75; 10 bu. \$134.50; 15 bu. \$201.00  
 20 bu. \$267.00

#### MONTANA GROWN ALFALFA SEED

Many of our customers are asking for Montana Grown Alfalfa Seed. Weather conditions and the severe winters in this territory are quite favorable for producing Alfalfa of a superior hardiness. We are prepared to furnish our customers with the finest grade of Montana grown Alfalfa Seed, so you will get the very best quality that money will buy if you send to us for your seed. Our seed is the best, plump, uniform and fine colored. However, we cannot say that the Montana grown seed will grow any better or give any better results than our Hardy Non-Irrigated Kansas Grown Seed. Our prices on Alfalfa Seeds are unusually low. Compare our seeds and prices with others. We will save you money if given the opportunity. Prices F. O. B. Salina, Kansas, Bags Free:

per bu. \$15.00; 5 bu. \$73.75; 10 bu. \$146.00; 15 bu. \$217.00  
 20 bu. \$288.00

## Grimm Variety Alfalfa Seed—Hardest Alfalfa Grown



Mixed Grass Seeds Make Fine Pasture and Heavy Crops of Hay

# Mixed GRASS SEED

We offer you mixed seeds for much less money than we can sell the same grade of seed when separated. We only sell the lots of mixed seed that contain a good per cent of clover. When buying this seed we buy it on a Timothy basis. It often contains 20% Clovers. Our prices are low and you should order this mixed seed freely. Sold on a basis of 45 pounds to the bushel, costs very little more to sow than Timothy alone, and is far superior.

## MIXTURE No. 1—GREATEST OF ALL MIXTURES

Composed of half Clovers, Alsike, Red Clover, Sweet Clovers, Alfalfa, and balance Timothy. We have given special study to our Mixture No. 1 and can assure you we have one of the richest and most desirable of all. It inoculates your land for either alfalfa or sweet clover while growing the heaviest kind of hay crop and if used for pasture, it cannot be excelled. Don't fail to consider the use of this mixture if you wish to seed a field for pasture or hay or wish to grow Alfalfa afterwards. Just the kind of combination our customers have been demanding. This is one of the most popular mixtures we have ever offered as it contains a larger percentage of legumes and we are in a position to make the price absolutely right. Our wonderful trade on this class of seed is largely due to our low prices and extra values we offer. This mixture is an exceptional bargain. Prices F. O. B. Salina, Bags Free:

per bu. \$6.75; 5 bu. \$33.50; 10 bu. \$63.50; 15 bu. \$99.00; 20 bu. \$131.00; 25 bu. \$162.50;

### Timothy and Alsike Clover

Greatest hay and pasture combination for spring seeding. Most wonderful and meritorious grass crop ever discovered. A mixture of Timothy and Alsike for moist, low lands, or for any land that will grow Timothy and Clover. This mixed seed has made us many a pleased customer. Prices F. O. B. Salina, Bags Free:

per bu. \$4.50; 5 bu. \$22.25; 10 bu. \$44.00; 15 bu. \$65.25  
20 bu. \$86.00

### Timothy and Red Clover

Sow Timothy and Red Clover mixed and you will get better results for either hay or pasture by doing so. The Timothy will thicken up the stand and make a much heavier crop of hay than Red Clover alone. Mixture contains a good percentage of Clover and is mixed for general seeding. Prices F. O. B. Salina, Bags Free:

per bu. \$4.50; 5 bu. \$22.25; 10 bu. \$44.00; 15 bu. \$65.25  
20 bu. \$86.00

## PERMANENT PASTURES OR MEADOWS

To meet the demand for a grass seed which will produce a meadow or pasture that will furnish the greatest amount of forage and at the same time produce a crop that will make a continuous growth throughout the season and meet various conditions of soil, climate, etc., we are offering you our special pasture mixtures, which are the result of our experience in handling same. Experience has proven conclusively that a mixture of grass makes a better permanent pasture than the growing of one crop exclusively. Sow from 15 to 20 pounds to the acre. Prices F. O. B. Salina, Bags Free:

**FOR MEADOWS**—This mixture has been formulated with the idea in view of producing the greatest tonnage of palatable, nutritious, high-grade hay, selected to produce the most vigorous growths in the shortest time and produce hay of superior quality. Please specify the kind of ground you want to seed.

**FOR PASTURES**—Selected with the idea in view of having a succession of grasses that will make a permanent pasture and keep improving each year. These grasses will furnish pasture for all kinds of stock from earliest spring through the hot summer until late fall. Name kind of ground you want seeded.

Above mixtures are made from seeds of the following well known varieties: Alfalfa, Blue Grass, Timothy, Red Clover, Alsike, Red Top, Orchard Grass, Meadow Fescue, English and Italian Rye Grass and Bromis Inermis.

10 pounds \$2.00; 25 pounds \$4.25; 50 pounds \$8.50; 100 pounds \$16.00; 200 pounds \$30.00

### Timothy and Sweet Clover

The combination of Timothy and Sweet Clover increases the yields. The two fill up the growth without leaving empty spaces. It makes a solid mass of green. Timothy alone does not fill the ground. Neither does Sweet Clover, unless it is sown very heavy. Grow together for big results. Prices F. O. B. Salina, Bags Free:

per bu. \$3.60; 5 bu. \$17.75; 10 bu. \$35.00; 15 bu. \$51.75  
20 bu. \$68.00

### Timothy, Alsike and Red Clover

This mixture has proven unusually popular with a large number of our customers as many of them wished something with these mixtures. Our prices were never more popular than now. You should order a few bushels of this mixture and reduce your seeding costs. This is a proven mixture. Prices F. O. B. Salina, Bags Free:

per bu. \$4.50; 5 bu. \$22.25; 10 bu. \$44.00; 15 bu. \$65.25  
20 bu. \$86.00



Red Clover Plant

# Medium Red Clover

BUSHEL—60 POUNDS

## Spring Seeding Time February to May

2,500 TO 4,000 POUNDS OF HAY PER ACRE

### MEDIUM RED CLOVER

Also called Small Red June Clover. This is the common Red Clover so popular everywhere—the farmers friend, the soil restorer, the bountiful feed plant. This is the most valuable clover in general use. It is especially desirable for dairy cows on account of its high percentage of nitrogenous elements. It is splendid for hay, pastures, soiling or plowing under. It is the standard anywhere for hay and pasture. Two cuttings may be made in a season. Our Clover seed is always in demand and we carry a very large stock of seed—three grades. Prices F. O. B. Salina, Bags Free:

Choice Quality—\$9.00; 5 bu. \$44.25; 10 bu. \$87.00; 15 bu. \$128.25; 20 bu. \$168.00

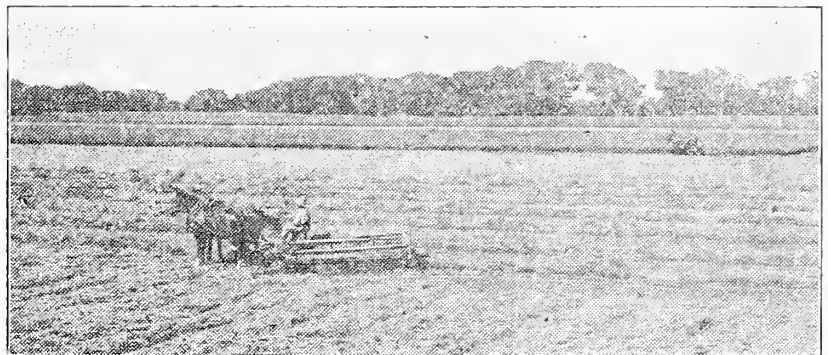
Fancy Quality—\$11.40; 5 bu. \$56.00; 10 bu. \$110.00; 15 bu. \$162.00; 20 bu. \$212.00

Supreme Quality—\$13.50; 5 bu. \$66.25; 10 bu. \$130.00; 15 bu. \$191.25; 20 bu. \$250.00



We handle nothing but NATIVE GROWN RED CLOVER, Canadian Clover will be stained 1% iridescent Violet; French 1% Green; Unadapted 10% Red.

## Swedish or Alsike Clover



BUSHEL—60 POUNDS

A Field of Alsike-Clover Hay

## Spring Seeding Time February to June

2,000 TO 5,000 POUNDS OF HAY PER ACRE

### ALSIKE OR SWEDISH CLOVER

The best Clover for low moist soils or soils deficient in lime. Under certain conditions it has many advantages over other Clovers. For instance, where the soil is slightly acid or sour and lime is hard to get or for some reason has not been applied, sow Alsike. Alsike makes an excellent feed for dairy cows and is bright colored and sweet when properly cured. The plant being smooth, it is less dusty than Red Clover hay. It adapts itself to a great variety of soils and conditions, being capable of resisting the extremes of drought and wet and does not winter kill as readily as the other Clovers. Prices F. O. B. Salina, Bags Free.

Choice Quality—\$9.00; 5 bu. \$44.25; 10 bu. \$87.00; 15 bu. \$128.25; 20 bu. \$168.00

Fancy Quality—\$11.40; 5 bu. \$56.00; 10 bu. \$110.00; 15 bu. \$162.00; 20 bu. \$212.00

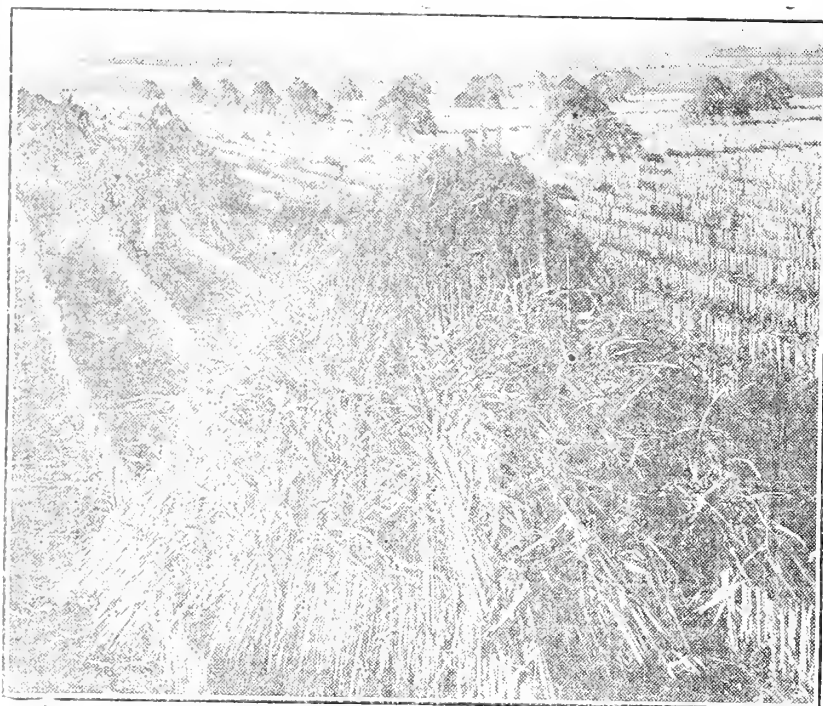
Supreme Quality—\$13.50; 5 bu. \$66.25; 10 bu. \$130.00; 15 bu. \$191.25; 20 bu. \$250.00



Our Alsike is NATIVE GROWN SEED—Northern and Western Grown.

## Domestic Grown Red Clover-Alsike

Do Not Buy Imported Seed



The Above Scene Shows a Heavy Producing Field of Cane

(SWEET)

# Sorghum Cane

Cane is Recognized as the Leader of Forage Plants  
 Growing Cane for Ensilage Has Become an  
 Established Part of American Agriculture  
 The Acreage Being Sown to Cane  
 Is Greatly on the Increase.

We deal extensively in Cane as we are favorably located for handling it and are in a position to save our customers money on this crop. We have a big supply of Cane this year and at prices that are attractive. We want your order for Cane and believe we can save you money. Prices quoted on varieties listed below are F. O. B. Salina, Bags Free

**BLACK AMBER CANE**—Intended for hay or silage and seed. Seed has a ready market. It is little affected by hot, dry seasons; a safe and profitable crop either for forage or seed purposes.

per bu. \$1.75; 5 bu. \$8.60; 10 bu. \$17.00; 15 bu. \$25.10  
 20 bu. \$33.00

**RED AMBER CANE**—This is an early variety, similar to Black Amber, however, it is more leafy. It is considered a standard variety and is a very satisfactory catch crop for late sowing.

per bu. \$1.75; 5 bu. \$8.60; 10 bu. \$17.00; 15 bu. \$25.10  
 20 bu. \$33.00

**SUMAC OR RED TOP CANE**—Seeds shell of clean. More desirable for feeding. Very leafy and sweet. It makes the most fodder and forage of any of the sorghums. A very profitable feed.

per bu. \$1.75; 5 bu. \$8.60; 10 bu. \$17.00; 15 bu. \$25.10  
 20 bu. \$33.00

**KANSAS ORANGE CANE**—This variety is fast gaining in favor, especially where fodder is desired as it produces more fodder than the early Ambers. Makes especially nutritious silage.

per bu. \$1.75; 5 bu. \$8.60; 10 bu. \$17.00; 15 bu. \$25.10  
 20 bu. \$33.00

**COLEMAN'S EVERGREEN CANE**—It is a wonderful sorghum producer, also a splendid forage crop for green feeding. Makes excellent hay if sown thick with drills. It is exceedingly juicy and sweet.

per bu. \$1.75; 5 bu. \$8.60; 10 bu. \$17.00; 15 bu. \$25.10  
 20 bu. \$33.00

**HONEY DRIP CANE**—Makes finest molasses both in color and pleasant to the taste. This variety makes a wonderful growth, keeps green a little longer, allowing plenty of time to harvest.

per bu. \$1.75; 5 bu. \$8.60; 10 bu. \$17.00; 15 bu. \$25.10  
 20 bu. \$33.00

**TEXAS RIBBON CANE**—Grows a taller and heavier stock than the Amber. Very much like the Evergreen. Fine for syrup. It is best cut for silage when seed begins to harden. It is of superior quality.

per bu. \$1.75; 5 bu. \$8.60; 10 bu. \$17.00; 15 bu. \$25.10  
 20 bu. \$33.00

**SOURLESS ORANGE CANE**—Juice in stem does not ferment as quickly as others. Hulls are pale brown, becoming paler when ripe, half closing the straw colored grains. Particularly drought resistant.

per bu. \$1.75; 5 bu. \$8.60; 10 bu. \$17.00; 15 bu. \$25.10  
 20 bu. \$33.00

## Choice Millet Seed--Our Specialty

ADAPTED TO REGIONS OF LIGHT RAIN FALL

Millets are used practically for forage, being very valuable where Timothy is an uncertain crop. The hay is fed most satisfactorily to dairy cows and sheep. In feeding value it ranks above Timothy. We do not think the value of Millet as a feed is recognized by a great many farmers or more of them would be growing it. Millet hay is excellent for all kind of stock except, possibly, work horses. For dairy cows it ranks very high.

You can make no mistake in planting Millet for hay. Anyone growing rye or other grain,

should sow the land to Millet immediately after the crop is harvested

as you can grow two crops by handling it in this manner.

Western Golden—per bu. \$1.50; 5 bu. \$7.35; 10 bu. \$14.50; 15 bu. \$21.35; 20 bu. \$28.00

White Wonder—per bu. \$1.50; 5 bu. \$7.35; 10 bu. \$14.50; 15 bu. \$21.35; 20 bu. \$28.00

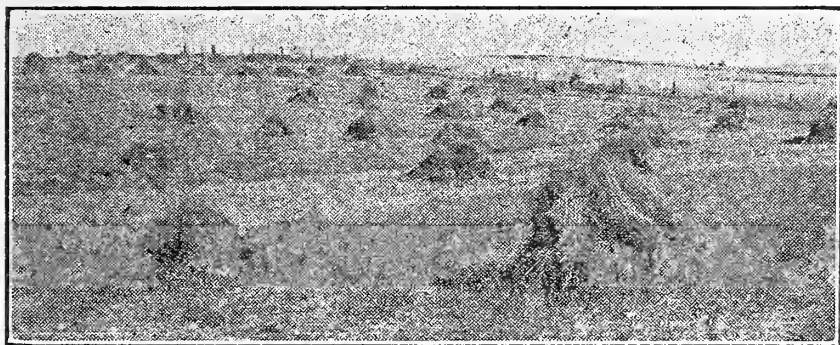
Siberian—per bu. \$1.50; 5 bu. \$7.35; 10 bu. \$14.50; 15 bu. \$21.35; 20 bu. \$28.00

German—per bu. \$1.75; 5 bu. \$8.60; 10 bu. \$17.00; 15 bu. \$25.10; 20 bu. \$33.00

Common—per bu. \$1.50; 5 bu. \$7.35; 10 bu. \$14.50; 15 bu. \$21.35; 20 bu. \$28.00

Reg—per bu. \$1.75; 5 bu. \$8.60; 10 bu. \$17.00; 15 bu. \$25.10; 20 bu. \$33.00

# White Biennial Sweet Clover



Poor, Hilly Lands Produce Abundant Chops of Sweet Clover

## Lot--"Economy"

A Good Grade of Seed. Not the Finest but  
Very Dependable

# \$4.50 per bu.

Bags Are Free--60 pounds to bushel

OUR BARGAIN PRICES SAVE YOU MONEY

## Another Bargain That Appeals to Good Farmers

### SAMPLE ENCLOSED--ORDER NOW

Don't consider that because of the low price it must be country run seed. It is re-cleaned stock showing good purity and it has been scarified like every other lot. The germination is also good. For practical purposes it is very reliable. It just doesn't look as smooth and uniform as our best seed. That's why the seller sacrificed on the price and we are passing the saving on to you. We have other lots that are not as nice as this but even in the cheaper grades you will get seed that gives good satisfaction. Lot "Economy" is low in price but has a much finer quality than the price indicates. In short it is a real bargain in good White Biennial Sweet Clover seed that shrewd buyers will be quick to pick up. You can cover your requirements on Sweet Clover Seed for next spring now, and save a nice sum of money on your seed bill.

### QUANTITY PRICES

5 bu. ....	\$21.50
10 bu. ....	42.00
15 bu. ....	61.50
20 bu. ....	80.00

**F. O. B. Sa'ina  
BAGS FREE**

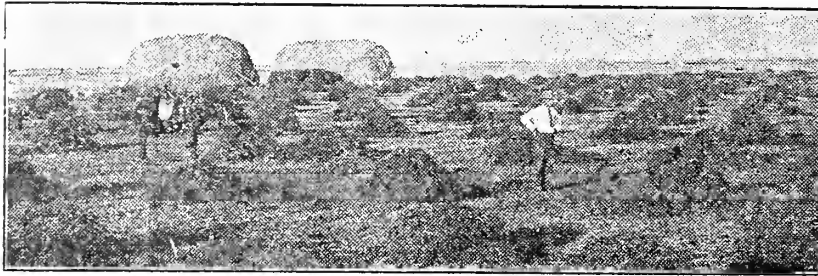


# KANSAS SEED CO.



"Grimm Alfalfa Special on the Other Side"

# Grimm Variety Alfalfa Seed



This Month's

## Sensational Offer

**GRIMM--The Greatest Alfalfa Plant of the Age--GRIMM**  
 OUR BARGAIN PRICES SAVE YOU MONEY

SAMPLE  
 ENCLOSED

### SPECIAL \$14.00 BUSHEL

SAMPLE  
 ENCLOSED

**BAGS FREE F. O. B. SALINA**

Grimm Alfalfa is becoming the recognized leader of all alfalfa plants. Crop Authorities, Agricultural Colleges, Farm Paper Writers, etc., are all advocating the use of Grimm Alfalfa. Our own Alfalfa expert, Mr. Chas. Henning was recently talking Alfalfa with some of the foremost Alfalfa plant authorities in the seed trade and they all agreed and believed "FROM EXPERIMENTS CONDUCTED" that Grimm Alfalfa was the coming plant. The advantages of Grimm are many and greatest of all are its hardiness. This variety withstands severest winters and driest summers. Another great advantage of the Grimm is its yielding qualities. You can figure on four crops of Grimm nearly every year and we are conservative in stating that the yield each year will be fully a ton more per acre. We have made special efforts in stocking Grimm Alfalfa Seed and are in a position to save our customers money on this seed. Anyone contemplating sowing Alfalfa seed of any kind should consider Grimm. We have a big supply this season and at bargain prices. Grimm might cost you a little more per acre to sow, but when you consider the hardiness and yield, we believe it is money well spent. Read more about Grimm on the back of the cover page.

#### QUANTITY PRICES

5 bu.....	\$ 68.00
10 bu.....	135.00
15 bu.....	198.75
20 bu.....	260.00

**F. O. B. Salina  
 BAGS FREE**



## KANSAS SEED CO.

**SALINA, KANSAS**



"Sweet Clover Special on the Other Side"

# Miscellaneous Grass Seeds

## ORCHARD GRASS SEED

The demand for Orchard Grass the past few seasons has been increasing and the farm journal and experimental stations have been advertising the use of it and explaining its virtues, exceptionally valuable for pasture or hay land. It furnishes green grass very early in the spring and until late in the fall. The roots extend to a great depth and will stand drought better than most other grasses. It is well suited for shady places such as orchards and groves. It grows in tufts and is therefore, suited to be sown with other grasses. Grows on all kinds of land but does best on deep, rich, sandy loam or clay soils. It flowers in June, about the same time as Red Clover and is often grown with it. It blooms three weeks earlier than the Timothy. We have a fine lot of seed at very attractive prices. We believe we can save you money and you will find it to your interest to send us your order. Prices F. O. B. Salina, Bags Free:

per bu. \$3.20; 5 bu. \$13.85; 10 bu. \$31.40; 15 bu. \$45.50; 20 bu. \$61.50; 25 bu. \$76.25

### JAPAN CLOVER

The crop that is becoming very popular. Its great value lies in its ability to make astounding yields on poor, sour, acid soils. Japan Clover is a soil builder. Makes excellent pasture on poor soils and lots of fine hay on better land. Ceres earlier. Is the annual variety. However, if allowed to go to seed will reseed itself and make a good stand the following year. Where Red Clover and Alfalfa flourish they would probably be more profitable to grow. If you have trouble with growing Alfalfa or Red Clover, Japan Clover is a crop you should try. Prices F. O. B. Salina, Bags Free:

per bu. \$5.50; 5 bu. \$27.25; 10 bu. \$54.00; 15 bu. \$80.25  
20 bu. \$106.00; 25 bu. \$131.25

### CRIMSON CLOVER

Also known as Incarnate Clover. The importance of this annual clover is becoming more and more realized each year. It grows luxuriantly on the rich, fertile, loam soils, and will thrive on soil too poor for growing Red Clover, being richer in protein. It is especially valuable for silage purposes and is relished by dairy stock. The enormous yields of silage which it produces per acre makes it a crop which is of great value to the dairy farmer. You are protected when you buy your seed from us. Prices F. O. B. Salina, Bags Free:

per bu. \$12.00; 5 bu. \$59.50; 10 bu. \$118.00; 15 bu. \$175.50  
20 bu. \$232.00

## BROMUS INERNIS

There never was a better time to start with Bromus. Splendid for hay and pasture. Bromus Grass is good everywhere. It converts waste and barren land into a thing of beauty and adds greatly to the profit of valuable land. The introduction of Bromus Inernis means millions of dollars added to the wealth producing power of this country. One sowing will stand for ten years. It grows thick and dense, has been known sometimes to eradicate obnoxious weeds such as the wild mustard, cockleburs, dock, etc. in three years time. It is introduced and recommended by the very highest authorities on these subjects so there is no mistake about it. It is drought defying, frost resisting, yields enormous crops of splendid hay and adapts itself to every condition in soil and climate and to any use to which grass may be put, equalling in quality and rivaling in yield and other grass. Its worth is beyond estimate. Prices F. O. B. Salina, Bags Free:

per bu. \$3.80; 5 bu. \$18.75; 10 bu. \$37.10; 15 bu. \$54.75; 20 bu. \$72.00; 25 bu. \$88.75

### DWARF ESSEX RAPE

The most profitable pasture plant in existence, quickest and cheapest pasture crops for sheep, young cattle, poultry and One acre will pasture more hogs, sheep and cattle than six acres of grass or clover. It has no equal as a healthful fattening pasture food and stands without rival in cheapness and effectiveness. The demand for rape is increasing rapidly and the higher the price of land the more rape will be used. Many farmers should grow rape with their corn, as it costs but little to sow and much green feed can be secured in this way. High quality at low prices. Prices F. O. B. Salina, Bags Free:

per bu. \$5.00; 5 bu. \$24.50; 10 bu. \$48.00; 15 bu. \$70.50  
20 bu. \$92.00; 25 bu. \$112.50

### SPRING VETCH

A very productive and highly nutritious plant. Excellent to cut green for soiling or making into hay. Splendid for feeding cattle and stock of all kind. We find an increasing demand for Spring Vetch as more is being used for plowing under. It has the advantage over peas in that it makes a greater growth of vine while the seed is much smaller and less quantity is required to plant an acre. Furthermore, this plant is adapted to the north much better and is unquestionably superior on this account. Vetch is bound to increase as the value of the plant is better understood. Prices F. O. B. Salina, Bags Free:

per bu. \$4.50; 5 bu. \$22.00; 10 bu. \$43.00; 15 bu. \$63.00  
20 bu. \$82.00

## RED TOP OR HERD GRASS

In many sections Red Top is the leading Grass and is prized very highly. It is especially valuable for sowing on your sour or acid soils, land inclined to be wet or in low marshy places. It does well on soils that are not rich enough for Timothy or other grasses. Red Top makes a very dense sod that stands trampling and will continue to grow for a longer time during the year than almost any other grass. It produces a fine quality hay which contains more protein than Timothy and is relished by all stock. Red Top is used in practically all permanent pasture mixtures. It has the widest range of any grass in America as a general utility grass. Prices F. O. B. Salina, Bags Free:

Fancy Quality—per bu. \$3.20; 5 bu. \$15.85; 10 bu. \$31.40; 15 bu. \$45.50  
Supreme Quality—per bu. \$3.60; 5 bu. \$17.85; 10 bu. \$35.40; 15 bu. \$52.05

### MEADOW FESCUE

It is the most nutritious of all grasses. It is a most persistent grower, resists drought and cold winters, makes good hay and cattle thrive on it whether in a green or dry state. Succeeds on poor soil but thrives best on rich heavy soil. Even gumbo, and any good corn land will make a good stand. The roots penetrate deeply from 12 to 15 inches. It takes extremely dry weather to effect it. It will stand more freezing than any other variety and yields an abundant crop of seeds. The ground should be plowed before sowing and allowed to settle. The seed should be put as near the surface as possible. This is usually done with a wheat drill. Prices F. O. B. Salina, Bags Free:

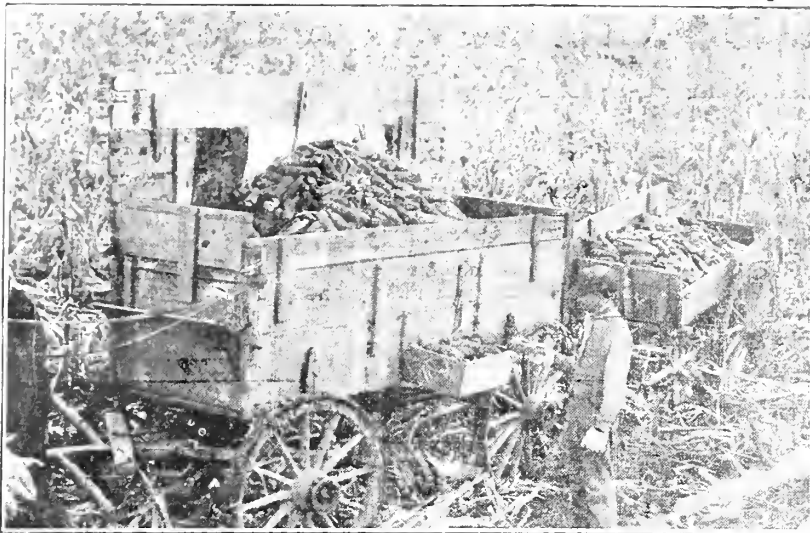
Per bu. \$3.80; 5 bu. \$18.75; 10 bu. \$37.10; 15 bu. \$54.75  
20 bu. \$72.00

### BERMUDA GRASS

The great lawn and pasture grass. It is a low growing, fine leaved perennial grass with vigorous, creeping stems. It is a persistent grower and will spread, forming a thick mat like turf. It does well on the poorest, sandiest soil. It is never injured by the closest pasturing or frequent cuttings; distinctly sub-tropical and flourishes under the hot rays of the sun. It is also used for the purpose of holding embankments, creek banks and places exposed to wash during heavy rains. Prices F. O. B. Salina, Bags Free:

per bu. \$4.00; 5 bu. \$24.25; 10 bu. \$48.00; 15 bu. \$71.25  
20 bu. \$94.00

Prices Postpaid—1 lb. 60c 2 lbs. \$1.10; 3 lbs. \$1.65; 5 lbs. \$3.00



Putting Likely Seed Ears into Box Attached to Wagon  
Soft Corn into Trailer

(FINEST)

# SEED CORN

All Selected Stock

Selecting, Sorting, Preparing and Caring for  
Seed Corn is Just as Important as Breeding  
and Growing. Every Ear of Our Corn  
is Sorted by Hand Uniform and  
of the Highest Quality

Our prices on Seed Corn are always as low as possible consistent with quality. We use the greatest of care in the selecting of stock, and we handle nothing but the best standard varieties. Good seed is half the battle, and as a bushel will plant 6 to 8 acres it always pays to plant the best.

## Main Crop WHITE Varieties      Main Crop YELLOW Varieties

- ST. CHARLES (White 100-110 days.)  
The cob is red and the grain white.
- BOONE COUNTY WHITE (100-120 days.)  
Extra large and leafy stalks.
- IOWA SILVER MINE (90 to 110 days.)  
"The National Corn," fills well.
- PRIDE OF SALINE (90-110 days.)  
Resists drought and disease well.
- KANSAS WHITE DENT (90-110 days.)  
Medium heavy, very leafy, well filled.
- WHITE PEARL (90 to 100 days.)  
Medium size, good milling variety.

- REID'S YELLOW DENT (90-100 days.)  
The most popular Yellow Corn grown.
- SALINA'S BIG PERFECTION (90-110 days.)  
Large, rugged stalks, produces large ears.
- IMPROVED LEAMING (90-100 days.)  
A favorite with stockmen and dairymen.
- LEGAL TENDER (100-110 days.)  
Abundant foliage, desirable for fodder.
- IOWA GOLD MINE (90-110 days.)  
Best medium early yellow variety corn.
- KANSAS SUNFLOWER (90-100 days.)  
A high yielding medium early variety.

## Special Notice!

Our Seed Corn is put up ready for shipping in even weight two-bushel bags. We do not break sacks on orders for less than three bushels. Prices F. O. B. Salina. Bags Free:

PRICES—(Any variety listed above)—2 bu \$5.00; 4 bu. \$9.80; 6 bu. \$14.40; 8 bu. \$18.80; 10 bu. \$23.00

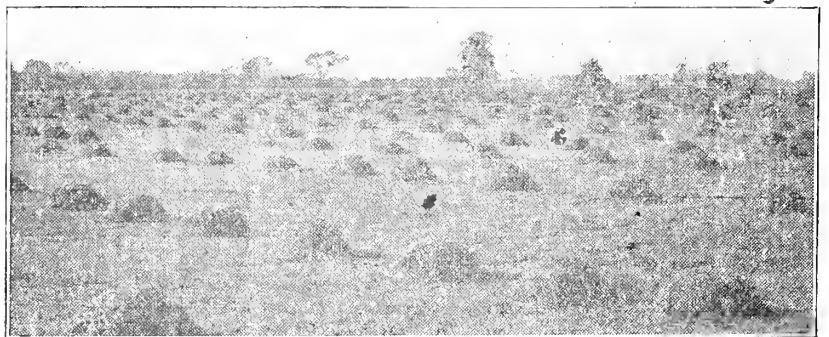
BLOODY BUTCHER (90-100 days), per bu.....	\$3.50	MEXICAN JUNE (70-80 days), per bu.....	\$5.00
SQUAW (90-100 days), per bu.....	\$4.00	WHITE ENSILAGE (75 days), per bu.....	\$4.00
CALICO (90-100 days), per bu.....	\$3.50	YELLOW ENSILAGE (75 days), per bu.....	\$4.00

## PLANT COW PEAS

YOU WILL FIND THEM  
A GREAT MONEY MAKER

WHIPPOORWILLS—A favorite, early bunch-growing variety. Brown speckled seeds which are more easily gathered than from the vine growing sorts. The plants are rampant growers, hence well adapted for soiling purposes. Suitable for either grain or hay production. Prices F. O. B. Salina, Bags Free:

per bu. \$4.50;      5 bu. \$22.00      10 bu. \$43.00  
15 bu. \$63.00



Cow Peas Make Splendid Hay

NEW ERA—An early maturing variety which has proven very popular and satisfactory. It is the most nearly erect of any of the varieties, rarely having any prostrate branches. It is a heavy seed producer, vines cure easily, splendid dry forage, seeds smaller than almost any other variety. Prices F. O. B. Salina, Bags Free:

per bu. \$4.50;      5 bu. \$22.00      10 bu. \$43.00  
15 bu. \$63.00

A CROP OF COW PEAS WILL ENRICH YOUR FIELDS AND AT THE SAME TIME FURNISH THE BEST OF PASTUREAGE OR HAY FOR YOUR STOCK. Like Clover, the plants gather nitrogen from the air, and the roots, reaching deep down into the soil, bringing up the necessary potash, thus making a complete and natural fertilizer.



# FORAGE CROP SEEDS

**SPELTZ or EMBER**—Speltz is a cereal or grain, maturing earlier than wheat or oats. A sure crop, hardy and prolific. Rich in protein, therefore, making a good nurse crop for grass. Grows anywhere. Prices F. O. B. Salina, Bags Free:

per bu. \$2.75; 5 bu. \$13.60; 10 bu. \$26.90; 15 bu. \$39.90  
20 bu. \$52.60; 25 bu. \$65.00

**IMPROVED SPRING RYE**—The advantages of Spring Rye are many. The most important being its heavy yielding qualities even as a catch crop. If you are short of pasture, sow 5 or 10 acres of Rye. Prices F. O. B. Salina, Bags Free:

per bu. \$1.50; 5 bu. \$7.35; 10 bu. \$14.50; 15 bu. \$21.35  
20 bu. \$28.00; 25 bu. \$34.35

**GOOD SELECTED SEED OATS**—"Kanota and Red Texas" are our two leading varieties. Adapted to all United States and extreme south. Prices F. O. B. Salina, Bags Free:

per bu. \$1.00; 5 bu. \$4.85; 10 bu. \$9.50; 15 bu. \$13.85  
20 bu. \$18.00; 25 bu. \$21.85

**BUCKWHEAT**—It is one of the very best cover crops that can be grown in the orchard and flowers are very much elished by bees. A cool season crop well suited to late planting after harvest. Prices F. O. B. Salina, Bags Free:

per bu. \$2.30; 5 bu. \$11.25; 10 bu. \$22.00; 15 bu. \$32.25  
20 bu. \$42.00; 25 bu. \$51.25

**BROOM CORN**—Our evergreen variety is a very popular variety on account of its not being liable to blow and lodge as some of the taller varieties. It makes brooms you will admire.

per bu. \$3.10; 5 bu. \$14.25; 10 bu. \$30.00; 15 bu. \$44.25;  
20 bu. \$58.00; 25 bu. \$71.25

**IMPROVED WHITE SPRING BARLEY**—This variety has jumped to the front and is taking the lead as our most desirable variety of Barley. It yields well on poor land, enormously on good land. Try it! Prices F. O. B. Salina Bags Free:

per bu. \$1.25; 5 bu. \$6.10; 10 bu. \$12.00; 15 bu. \$17.50  
20 bu. \$23.00; 25 bu. \$28.10

## Kaffir

Kaffir Corn is the principal grain crop in many sections of the southwest. It is being most generally used and we take pleasure in recommending it not only as a grain but as a hay crop. More drought resistant than the Sweet Sorghums. They will grow on any land suitable for corn. Most of the varieties have dry pithy stalks and short narrow leaves. Makes excellent fodder, either green or dried. Some feed it to stock, heads and all. Any way it is treated it makes valuable feed. Prices F. O. B. Salina, Bags Free:

White Black Hull—per bu. \$1.25; 5 bu. \$6.10; 10 bu. \$12.00; 15 bu. \$17.60; 20 bu. \$23.00

Pink—per bu. \$1.25; 5 bu. \$6.10; 10 bu. \$12.00; 15 bu. \$17.60; 20 bu. \$23.00

Red—per bu. \$1.50; 5 bu. \$7.25; 10 bu. \$14.40; 15 bu. \$21.1; 20 bu. \$27.60

### MILO MAIZE

**MILO MAIZE**—The earliest of any of the sorghums. Almost a sure crop. One of the most popular of non-saccharine sorghums grown. Does not shatter in handling; can be cut with a binder and shocked like wheat. It is often fed in bundles or in the head to horses, cattle and hogs. Immense quantities are grown in the blackland belt and is becoming more popular each year. Prices F. O. B. Salina, Bags Free:

Supreme Quality—per bu. \$1.25; 5 bu. \$6.10; 10 bu. \$12.00  
15 bu. \$17.60; 20 bu. \$23.00

### SHROCK KAFFIR-SORGHUM

Shrock Kaffir Sorghum is unlike other grain sorghums for the reason that the seed will germinate readily when the ground is cold and this is a great advantage in getting early feed and ensilage for silos. The seed should be sown in rows 3 feet apart. Five pounds of seed is sufficient to plant an acre. It is non-saccharine sorghum and is somewhat similar to Kaffir Corn with the exception that the grains are somewhat larger and softer than Kaffir Corn. It is preferred by many on this account for feed in the head. It is about three or four weeks earlier than Kaffir Corn. 56 pounds per bushel. Prices F. O. B. Salina, Bags Free:

per bu. \$1.75; 5 bu. \$8.60; 10 bu. \$17.00; 15 bu. \$25.10  
20 bu. \$33.00

### FETERITA

**FETERITA**—The dry land forage plant has no equal where there is little rainfall, suffers less damage from chinch bugs than Milo. Of great value as a catch crop, grains somewhat larger and softer than Kaffir Corn, and is preferred by many on this account for feed in the head. Undoubtedly the most drought resisting of all the sorghum family. Prices F. O. B. Salina, Bags Free:

Supreme Quality—per bu. \$1.50; 5 bu. \$7.25; 10 bu. \$14.40  
15 bu. \$21.15; 20 bu. \$27.60

### SCHRIVER KAFFIR-SORGHUM

This is a kind of cross between Shrock and Feterita and has the same growing properties as Kaffir. The seed is white and the grains are somewhat larger and softer than Kaffir, used by many for feed in the head. It is not as early a grower as Shrock. This is a wonderful new, non-saccharine sorghum and our sales of this particular variety last year were quite large. The seed is scarce and we suggest that you order early as we do not believe we will have enough seed to go around. Makes excellent fodder either green or dried. It is an excellent drought resister. Good check feed. Weight 50 pounds per bushel. Prices F. O. B. Salina, Bags Free:

per bu. \$1.75; 5 bu. \$8.60; 10 bu. \$17.00; 15 bu. \$25.10  
20 bu. \$33.00

**Kansas Grown Alfalfa Seed Will Do Well in Every State**

# Soy or Soja Beans

## A Most Wonderful Plant

This Plant is Bound to Establish Itself as One of the Most Valuable Additions to American Agriculture. For Planting with Corn or Silo Use.

**MID-WEST BEANS**—The greatest general purpose bean, matures early, fine for silage or hogging down. It is tall and slender, low branching but high enough to miss binder leaves. Is a vigorous grower, heavy yielder, yellow color. We believe this one is one of the very best beans. Prices F. O. B. Salina, Bags Free:

per bu. \$3.00    5 bu. \$14.75    10 bu. \$29.25    15 bu. \$43.50

**MORSE EARLY GREEN**—This variety is grown extensively in this section and all parts of the corn belt. It is a leader and a very fine bean, heavy producer, good growth of vines; light green medium bean, does not shatter the same as some of the earlier varieties. Prices F. O. B. Salina, Bags Free:

per bu. \$3.25;    5 bu. \$16.00;    10 bu. \$31.50;    15 bu. \$46.50



Soy Beans Make Good Winter Feed for Cows and Pigs

# Miscellaneous Seeds

HUMAM CLOVER, per bu.....	\$12.00
ENGLISH RYE GRASS, per bu.....	\$3.45
ITALIAN RYE GRASS, per bu.....	\$3.45
DOMESTIC RYE GRASS, per bu.....	\$3.45
HARRY VETCH, per 100 pounds.....	\$12.00
CANADIAN FIELD PEAS, per 100 pounds.....	\$8.00
BLACK WILSON SOY BEANS, per 100 pounds.....	\$5.00
SUNFLOWER SEED, per 100 pounds.....	\$8.00
HEMP SEED, per 100 pounds.....	\$8.00
CANARY SEED, per 100 pounds.....	\$12.00

### SWEET CORN

STOWELL'S EVERGREEN, per 1-2 bu.....	\$3.95
COUNTRY GENTLEMAN, per 1-2 bu.....	\$4.15
GOLDEN BANTAM, per 1-2 bu.....	\$3.25

### POP CORN

JAPANESE HULLESS, per 30 pounds.....	\$3.60
WHITE RICE, per 30 pounds.....	\$2.70

## SEED NEWS

Prices Subject to Change

—Issued by—

KANSAS SEED COMPANY

Spring Issue 1930

### QUANTITY AND WEIGHTS OF SEEDS

SEEDS	lbs.	
	per acre	per bu.
Alfalfa—broadcast .....	10-20 lbs	60 lbs
Barley .....	95-110 lbs	48 lbs
Blue Grass, Ky.—lawns.....	60-100 lbs	14 lbs
Blue Grass, K.—pasture.....	20-30 lbs	14 lbs
Blue Grass, Can.—lawns.....	60-100 lbs	14 lbs
Blue Grass, Can.—pasture.....	14-20 lbs	14 lbs
Brome Grass.....	20-30 lbs	14 lbs
Broom Corn.....	5-8 lbs	48 lbs
Buckwheat.....	50-60 lbs	52 lbs
Clover, Alsike—alone.....	5-6 lbs	60 lbs
Clover, Crimson.....	12-15 lbs	60 lbs
Clover, Mam.—alone.....	8-12 lbs	60 lbs
Clover, mammoth—mixed.....	4-6 lbs	60 lbs
Clover, Red—alone.....	8-12 lbs	60 lbs
Clover, Sweet, hulled.....	12-15 lbs	60 lbs
Clover, Sweet, unhulled.....	25-30 lbs	30 lbs
Clover, White.....	4-8 lbs	60 lbs
Corn.....	7-14 lbs	56 lbs
Corn—for silage.....	40-56 lbs	56 lbs
Fescue, meadow.....	20-30 lbs	24 lbs
Fescue, other variety.....	28-35 lbs	14 lbs
Kafir—drills.....	12-15 lbs	56 lbs
Kafir—broadcast .....	50-60 lbs	56 lbs
Lawn Grass.....	60-100 lbs	20 lbs
Millet—for hay.....	30 lbs	50 lbs
Millet—Japanese .....	15-20 lbs	35 lbs
Oats .....	60-80 lbs	32 lbs
Orchard Grass—hay.....	21-28 lbs	14 lbs
Orchard Grass—seed.....	10-14 lbs	14 lbs
Peas, Cow—broadcast.....	60-75 lbs	60 lbs
Peas, Cow—drills.....	45-60 lbs	60 lbs
Peas, Cow—drill corn.....	20-30 lbs	60 lbs
Rape broadcast .....	6-8 lbs	50 lbs
Red Top—solid seed.....	6-8 lbs	
Red Top—unhulled.....	20-25 lbs	14 lbs
Rye—early sown.....	56-70 lbs	56 lbs
Rye Grass.....	28-35 lbs	24 lbs
Sorghum, Forage—broadcast.....	50-100 lbs	50 lbs
Sorghum, Forage—drills.....	12-15 lbs	50 lbs
Soy Beans—broadcast.....	60-90 lbs	60 lbs
Soy Beans—drill corn.....	15-20 lbs	60 lbs
Soy Beans—in drills.....	10-15 lbs	60 lbs
Sudan Grass—broadcast.....	20-25 lbs	40 lbs
Sudan Grass—drills.....	6-10 lbs	40 lbs
Sunflower .....	6-8 lbs	24 lbs
Timothy .....	11-15 lbs	45 lbs

Kansas Grown Alfalfa Seed Will Do Well in Every State

# High Quality - Quick Service - Low Prices

TO SAVE MOST, BUY YOUR SEEDS DIRECT FROM US

We deal directly with the Farmers, Granges, Clubs, etc., selling the best quality at the lowest prices. Our wholesale prices to the Farmers are often lower than the prices quoted dealers. You are practicing real economy when you send to us for your seeds. We specialize on Grass and Field seeds. WE DO NOT HANDLE GARDEN SEEDS OR NURSERY STOCK, and for this reason are better prepared to serve the buyers of farm seeds. We buy our stocks to advantage and sell them to you the same way. Owing to our favorable location in the field of production and the large volume of business done direct with the growers you will find our prices very attractive. Make an extra saving on your seed bill by buying early. Crops are short. Markets are advancing and the best usually goes first. Those who put off until tomorrow may be too late. Act now while the best is to be had at the least cost.

## LOCATION IMPORTANT TO SUCCESS

We consider Kansas the best state in the Union for the purpose of conducting a seed business and as a point of distribution, Salina is second to none. Kansas is the principal wheat raising state in the Union and also produces excellent qualities of ALFALFA, CLOVERS, CORN, OATS, FLAX and FORAGE CROPS, KAFFIR, CANE, SUDAN, etc. Salina is located in an ideal section for the handling and marketing of seeds. This fact should not be overlooked. Being in the field of production, we buy direct from the farmers who raise the seed. We have our own equipment for cleaning, grading, scariying, etc., and in this way it is possible for us to save you considerable on your purchase. Our expenses are kept at a minimum and every dollar saved in this way means increased value to our customers. In all we are in a position to render you a very valuable service in the way of furnishing you the best seeds at the lowest possible cost. Don't be misled and pay extravagant prices for seeds that are not superior or possibly equal to ours.

## USE OUR FREE STORAGE SERVICE

Buy your seed supply early. We will store it for you in our warehouse and make shipment whenever you wish. Many of our customers used this service the past season and their seed worries were over. We advocate early purchase this year. Seed crops as a whole were short last season. On account of drouth last summer and early fall and the heavy rains later, thousands of acres of grass and field seeds were lost. The usual winter wheat acreage was not sown. There is a large seeding of grass and clover seeds to be done this spring. On account of the increased demand and the short seed crop, we look for higher prices later. Our advice is to buy early. Then you know you will have your seed when you want it. If you do not have a place to store your seed, just say so. We will put it in our warehouse and make shipment whenever you say. Our storage service is free. Use it.

## CLUBBING ORDERS—SAVES MONEY

See if you can get some of your neighbors to order seeds with you and get the lowest quantity prices. You will be doing them a favor as well as yourself. If the club order consists of 20 bushels alfalfa seed, each one gets the benefit of the quantity price. Then if you have 15 bushels of clover you get the 15 bushel quantity price, or 25 bushels of Sudan you get the 25 bushel quantity price. Quantity prices apply only on so many bushels of a particular variety of seed. For example—5 bushels alfalfa seed; 3 bushels red clover; 10 bushels Sudan grass; and 8 bushels soy beans. This would make a 26 bushel order but would not entitle you to the 26 bushel price on each variety of seed ordered. Quantity prices apply to individual varieties only, that is, one kind of seed. If five neighbors ordered 4 bushels of alfalfa seed each, or a total club order of 20 bushels, they would be entitled to the 20 bushel price.

We do not employ agents. We sell our seeds at a low price and cannot afford to allow commissions other than those mentioned in quantity buying. We give each and every customer our very lowest prices.

## SAMPLES SENT FREE

When you are in the market for seeds write to us. We will send you samples of any seed that you may wish to buy. It places you under no obligation whatsoever. All we desire is a chance to show you that we can save you money on seeds. We will give you prices on every sample that we send. It gives you a chance to examine the values that we offer and to compare them with any other prices obtainable. We are proud of the quality of our seeds and the prices speak for themselves. Your judgment will satisfy us for all offers are gilt edge and good value. Every shipment will be equal to samples we send you. This year we can give you better service and better values than ever before.

Remember these facts as you study this book. We send you samples and make you a strictly wholesale price on whatever seed you may need. When we get your order the seed will be shipped promptly. We save you money and because of the above facts we believe we deserve your order. Write us today.

## BETTER SHIPPING FACILITIES

Our location is unexcelled for the distribution of seeds. We are located near the geographical center of the United States, in the heart of the agricultural country and close to the primary seed market of the world. Our location in the great alfalfa seed district of Kansas places us in an ideal section for the handling and marketing of seeds. We are in the field of production and it is easier and cheaper for us to procure seeds from the growers.

We not only get you jobbers rates but through service. We can make prompt shipments to all parts of the United States. Railroads entering Salina: MAIN LINE UNION PACIFIC SYSTEM; UNION PACIFIC BRANCHES—Salina, Solomon & Beloit; Salina & McPherson; Salina, Plainville & Oakley—ATCHISON, TOPEKA & SANTA FE; SALINA NORTHERN; MISSOURI PACIFIC; CHICAGO, ROCK ISLAND & PACIFIC; plus connecting lines giving quicker service to all parts of the United States.

**NON-WARRANTY**—Most of the failures with seeds are due to causes entirely beyond our control, such as unfavorable weather or soil conditions, too deep or too shallow planting, too much or too little water, etc., which renders it impossible for us to guarantee results, and although we take all possible care to supply only such seeds as will, under proper conditions, produce satisfactory results. THE KANSAS SEED COMPANY GIVES NO WARRANTY EXPRESS OR IMPLIED, AS TO DESCRIPTION, QUALITY, PRODUCTIVENESS, GERMINATION, PURITY, OR ANY OTHER MATTER OF ANY SEEDS IT SELLS, AND WILL NOT BE RESPONSIBLE FOR THE CROP.

## Kansas Grown Alfalfa Seed Will Do Well in Every State



**Start Growing**

**GENUINE**

**Grimm Alfalfa**

## **Recleaned, Tested Seed of the Finest Quality**

**Vigor, Hardiness and Heavy Yields—These Characteristics are Bred into Grimm**

We want to first give you a little history of the Grimm Alfalfa so you may know how it got the name and the cause of its being so hardy. About sixty years ago a man named Gwendolin Grimm came from Germany and settled in Minnesota. Mr. Grimm brought with him from near Baden, Germany, some Alfalfa seed that he knew as "everlasting clover." Right from the start this seed made phenomenal yields and did not winter kill as his neighbors' did. The farmers in his neighborhood were greatly surprised to see Mr. Grimm's Alfalfa growing to perfection after a hard winter, while theirs was all dead. The neighbors soon began getting seed from Mr. Grimm and their success with the seed soon grew to other sections and today the Grimm variety is grown all over the North, West and Northwest, and is the leading variety wherever grown. Grimm Alfalfa is distinguished, when in bloom, by a variegated color of flowers from white to very dark—almost black—yellowish to purple predominating. There are also more lateral or branching roots on Grimm plants than on common Alfalfa. This latter characteristic is undoubtedly a leading factor in its hardiness and enables it to withstand the heaving of soils due to spring freezes better than varieties with straight tap roots. Grimm Alfalfa is leafy and not inclined to grow so large and coarse as common Alfalfa. Our Grimm is all Northern or Western grown seed. It comes from sections where years and years of icy cold Winters have developed a hardiness against winter killing that is of untold value to the farmer who wants Alfalfa on his farm. Only the strongest plants survive to make seed. When you sow seeds from such crops you get plants of extra hardiness. You have a plant that can stand both hot summers and cold winters. The surest way of knowing you have the true Grimm variety is to buy your seed from a reliable seed house which is well posted in Alfalfa and know what they have to offer. We are giving special study to this variety. When buying such seed, you may feel sure you have the GENUINE GRIMM, the variety now so much in demand.

### **HEAVY YIELDS ARE MONEY MAKERS**

Our northern grown Grimm is in its very nature a prolific grower and a heavy producer. Therefore, cutting down Winter killing to a minimum, a heavy stand each Spring assures a tremendous production. Four, five and six tons per acre. The yearly crop is worth seventy-five to one hundred dollars per acre. And that comes year in and year out. You are truly growing gold when you have a field of our northern grown Grimm on your farm. No other general farm crop will bring you so much money with so little work as Alfalfa.

### **ECONOMY OF SOWING GRIMM**

The extra hardiness of our Grimm cuts winter killing to a minimum. That means larger yields. A stand that is damaged over winter will produce less hay per acre than a yield that comes through practically untouched. Such a field will yield from 1-2 to 1 1-2 tons per acre more than a damaged field. A difference of half a ton in yield means about \$10.00 per acre. You can easily see that in one year the Grimm can pay its extra lost four and five times over. The extra returns from Grimm will increase from year to year.

### **START WITH GRIMM ALFALFA**

If you are just starting Alfalfa you might just as well start with the best. Sooner or later most farmers are going to use Grimm. The seed is a little more expensive to start with but in the end it is usually the most economical. If you are growing Alfalfa now and have trouble with Winter killing, we urge you to sow Grimm. The extra hardiness and vigor and productiveness are worth much more to you than the extra cost per acre of sowing Grimm.

### **GENUINE GRIMM—REASONABLY PRICED**

Our Grimm is all highest quality stock. Big plump berries bright colored, high purity and germination. It is the genuine article and is strictly Extra Fancy Quality. We contracted this seed to a very good advantage. We operate on a close margin. You benefit by our contract. Compare quality, genuineness and price and you will find that our prices save you \$3.00 to \$5.00 per bushel.



**KANSAS SEED COMPANY, Salina, Kansas**